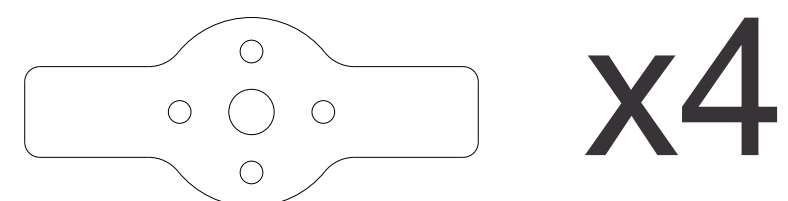
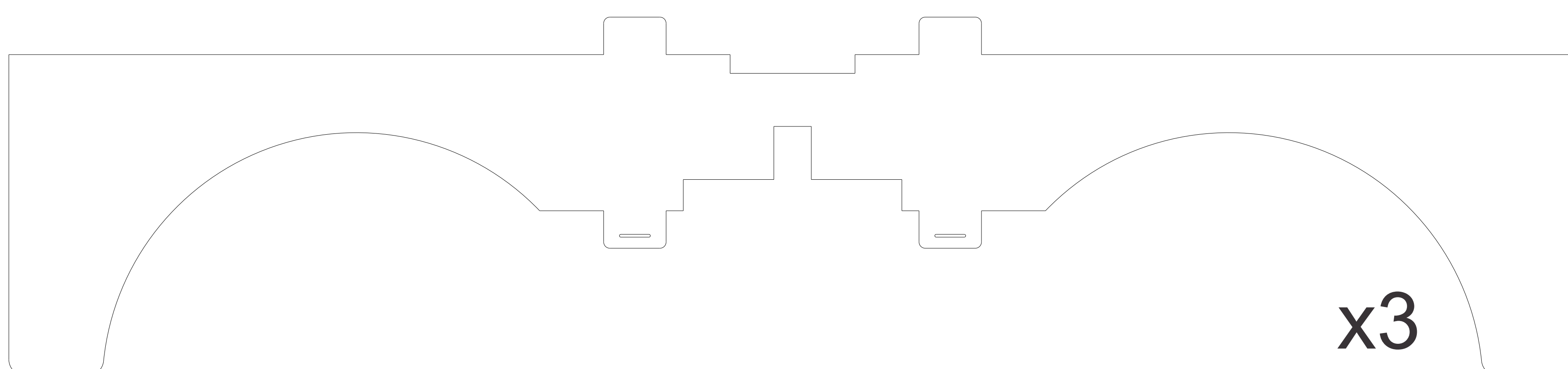
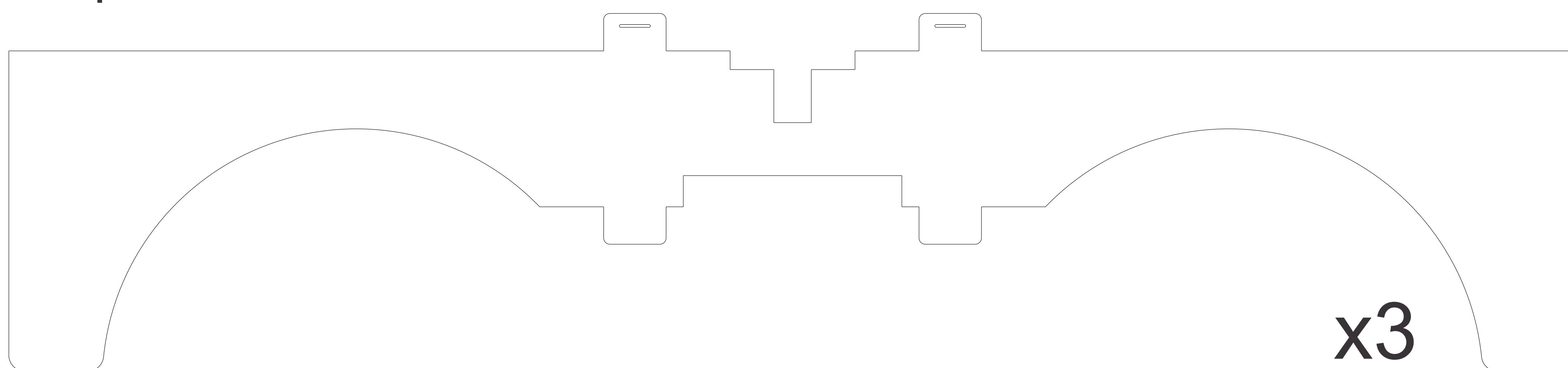


Cut this out of ABS or Aluminum

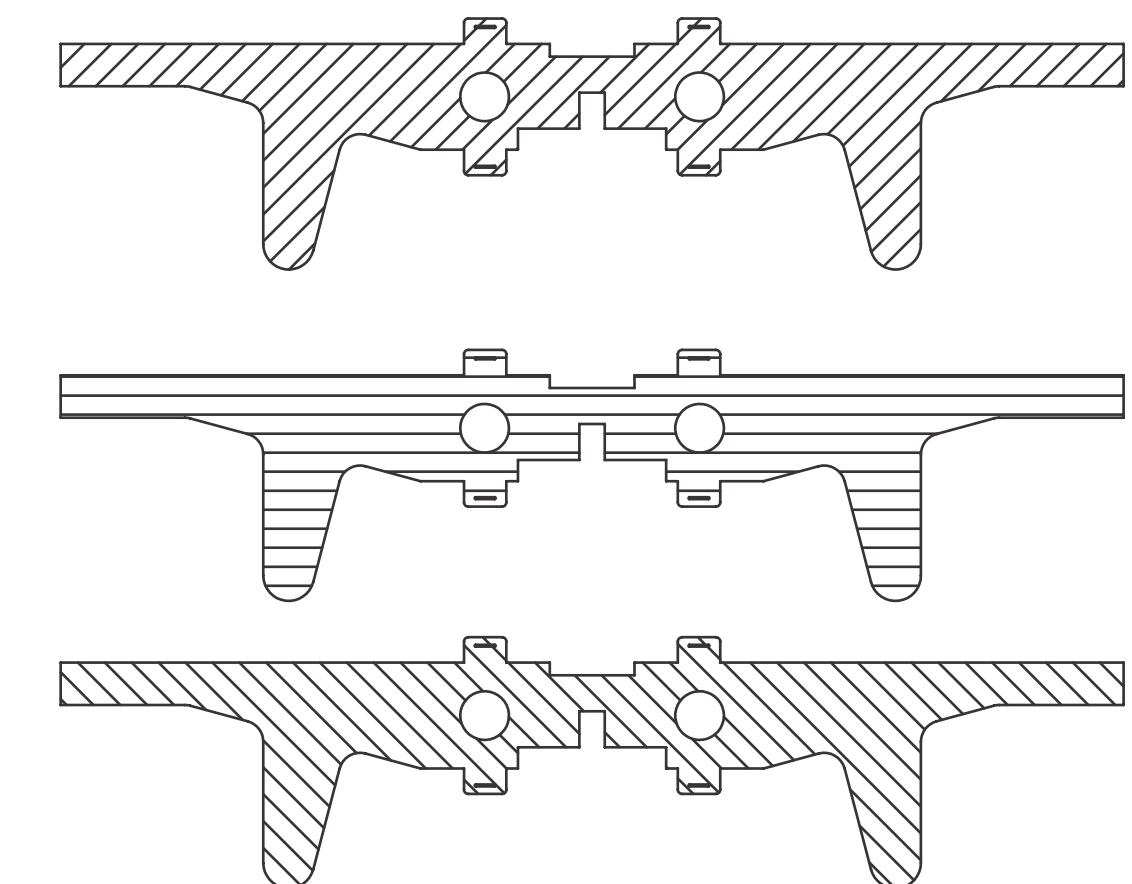


You can modify the basic shape. Here's another example of a different arm pattern:



Basic Instructions:

- Cut the parts out of 4mm cardboard, on a laser or CNC box cutter. You can also print the patterns out and cut them by hand, but that would be crazy.
- When cutting out the arms, the corrugation direction should be rotated 45 degrees for each rib. The center arm should be horizontally corrugated.



- Lay all the parts out except for the two middle arm pieces, and the underside of the top plate.
- Spray the pieces with Super77 or some other paper adhesive.
- Carefully place the glued pieces together, placing the parts you set aside on last.
- Let pieces dry.
- Put small pieces of tape over the slot tabs, and pierce the tape with a knife where the paper clip slit was just covered. This makes the tabs easier to remove and insert.
- Tape the tops of the arms across the corrugation edge. This will make the arms much stronger than leaving them uncovered. Make sure you get the top of the arm, and the underside under the motor mount.
- Assemble the arms, attach the bottom and top plates, and place the paperclips in the slits made earlier.

Paper Quad Rev.5b

©2012 Mike Estee
<http://www.mikeestee.com>

Scale 1:1
Units: millimeters

Also available under a CC-NonComm-Attrib-ShareAlike License.